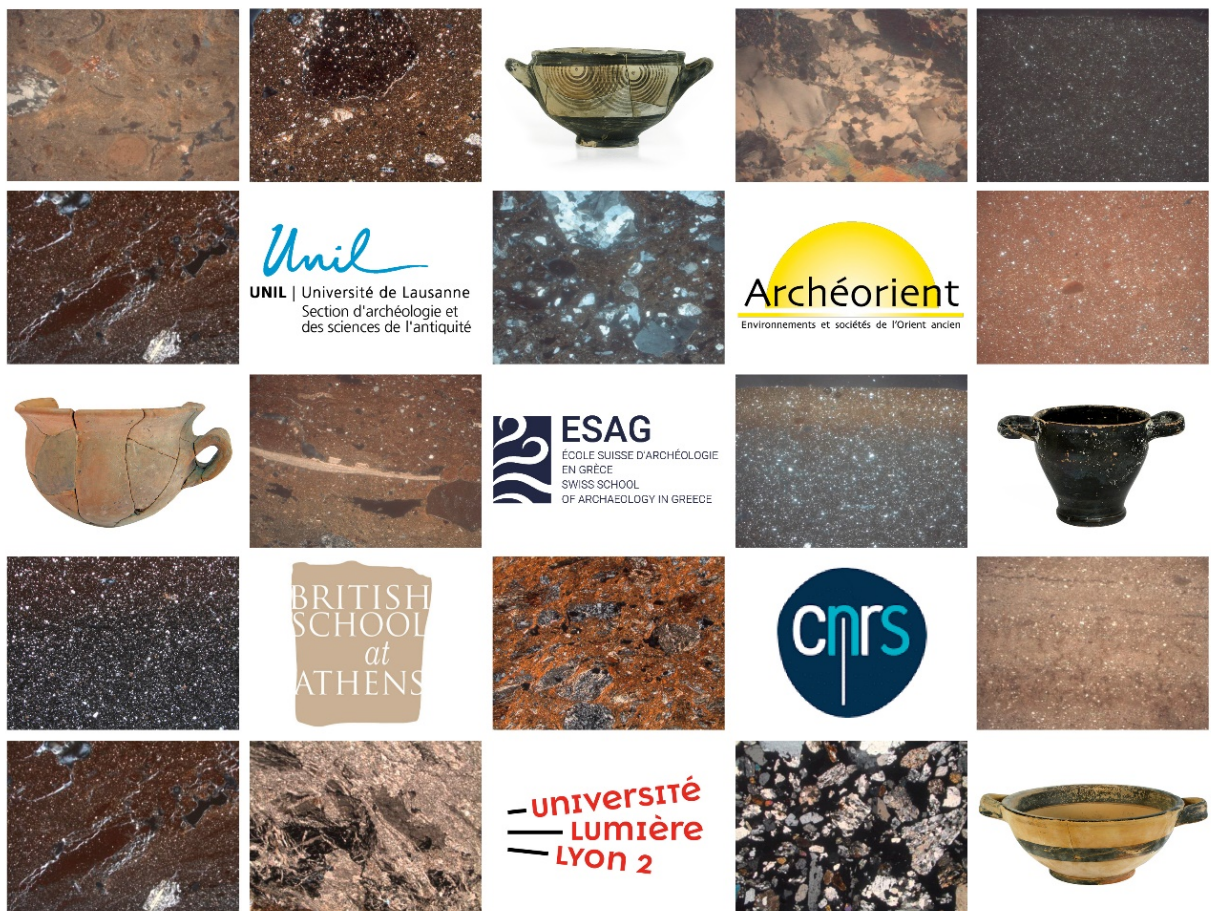


2nd International Workshop

Pottery Production at Eretria (Euboea) from Late Neolithic to Hellenistic Times

Athens, Fitch Laboratory of the BSA, 15-16 November 2019



Organising Committee:

Evangelia Kiriati (e.kiriati@bsa.ac.uk)

Tobias Krapf (tobias.krapf@esag.swiss)

Noémi Müller (noemi.mueller@bsa.ac.uk)

Sylvie Müller Celka (sylvie.muller-celka@mom.fr)

Programme

!! The time table below is indicative only. All presentations include ample time for discussion!!

Friday 15th of November, Fitch Laboratory of the British School at Athens, Seminar Room

10:00 – 10:30	Reception of participants - coffee
10:30 – 10:45	A brief review of targets and pending questions — <i>Sylvie Müller Celka</i>
10:45 – 11:30	The 2019 supplementary analyses. An overview of results and some general remarks on patterns and issues emerging when combined with earlier analyses — <i>Evangelia Kiriatzi, Noémi S. Müller, Xenia Charalambidou</i>
11:30 – 12:00	Geological sampling and comparative analysis of raw materials in relation to mainly the coarse wares of the Lefkandi and Eretria assemblages — <i>Ian Whitbread, Antonia Livieratou, Evangelia Kiriatzi, Noémi S. Müller, Xenia Charalambidou</i>
12:00 – 12:30	Late and Final Neolithic pottery from Eretria — <i>Sylvie Müller Celka</i>
12:30 – 13:00	Eretria Middle and Late Helladic coarse ware — <i>Tobias Krapf</i>
13:00 – 14:00	Lunch (Finlay Room of the BSA)
14:00 – 14:30	The late 8th - early 7th c. BC pottery from Eretrian non-funerary/sanctuary contexts — <i>Xenia Charalambidou, Thierry Theurillat, Samuel Verdan</i>
14:30 – 15:00	The 6th c. BC fine and coarse ware from the Stoa at Eretria — <i>Tamara Saggini</i>
15:00 – 15:30	Eretria Classical cooking ware and the new Early Classical fine ware samples — <i>Claudia Gamma, Kristine Gex</i>
15:30 – 16:00	Coffee break

- 16:00 – 16:30 **Eretria Hellenistic fine ware** — *Guy Ackermann*
- 16:30 – 17:00 **Eretria terracotta figurines** — *Pauline Maillard*
- 17:00 – 17:30 **Eretria transport amphorae** — *Marek Palaczyk*
- 20:00** **Dinner at the Ama Lachei taverna (Kallidromiou 69, Exarcheia)**

Saturday 16th of November, Fitch Laboratory of the British School at Athens, Seminar Room

- 10:00 – 10:30 **Overview of results. Eretria pottery production through time: identifying gaps, changes and continuities, contextualisation, problems, prospects** — *Evangelia Kiriatzi, Tobias Krapf, Noémi S. Müller, Sylvie Müller Celka*
- 10:30 – 12:00 General discussion
- 12:00 – 14:00 Outline of the final publication and practicalities of the forthcoming Eretria series volume (thin-section photography, fresh profile photography, style of drawings, guidelines about content consistency, format, number of drawings/photographs, text language, schedule, etc.)
- 14:00** **Lunch (Philippou restaurant, Xenokratous 19, Kolonaki)**